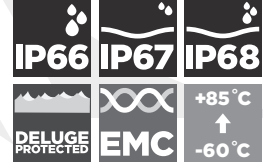
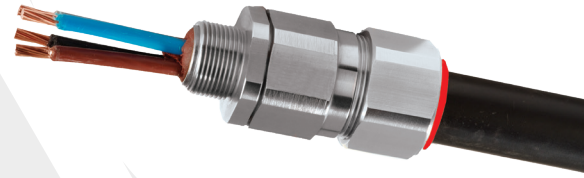


PX2K

PX2K GLOBALLY APPROVED, EXPLOSIVE ATMOSPHERE BARRIER CABLE GLAND

FOR ALL TYPES OF ARMoured CABLES

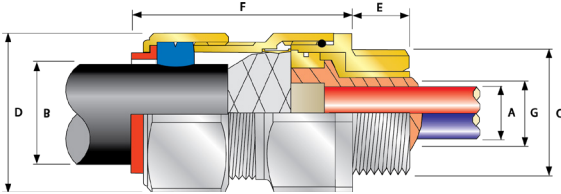
- Metal-to-metal armour clamping
- Direct & remote installation
- Compound barrier type flameproof seal
- Controlled outer 'load retention' seal
- Unique OSTG prevents overtightening
- Integral protected deluge seal
- -60°C to +85°C
- Globally marked, IECEx, ATEX, UL & cCSAus
- Superior EMC performance
- Once any cable inner sheath/bedding has been removed, the compound barrier seals directly around the internal cable cores, after the inner sheath/bedding has been removed, completely eliminating any risk of coldflow on all cable types



Ex eb Ex db Ex ta Ex nR

TECHNICAL CLASSIFICATION	
DESIGN SPECIFICATION	BS 6121:Part 1:1989, IEC 62444, EN 62444
MECHANICAL CLASSIFICATION*	Impact = Level 8, Cable Anchorage = Class D
ENCLOSURE PROTECTION	IK10 to IEC 62262 (20 joules) Brass & Stainless Steel only
ELECTRICAL CLASSIFICATION*	Category B (Category A when used with braid, tape or pliable wire armour cables)
INGRESS PROTECTION RATING**	IP66, IP67 & IP68****
DELUGE PROTECTION COMPLIANCE	DTS01:91
CABLE TYPE	Single Wire Armour (SWA), Aluminium Wire Armour (AWA), Wire Braid Armour (e.g. SWB), Screened Flexible (EMC) Wire Braid (e.g. CY / SY), Pliable Wire Armour (PWA), Steel Tape Armour (STA), Strip Armour (e.g. ASA)***
SEAL MATERIAL	CMP SOLO LSF Halogen Free Thermoset Elastomer / Epoxy Barrier Compound
SEALING TECHNIQUE	Unique CMP 'LRS' Outer Seal (Load Retention Seal)
SEALING AREA(S)	Inner Compound Barrier & Outer Sheath
CABLE GLAND MATERIAL	Brass, Electroless Nickel Plated Brass, Stainless Steel, Aluminium
ARMOUR CLAMPING	Detachable Compound Tube / Cone & AnyWay Universal Clamping Ring

* Mechanical & Electrical Classifications applied as per IEC 62444 & EN 62444 ** When CMP installation accessories are used. Refer to www.cmp-products.com for further information. ***Where the cable is permitted by code (NEC and/or CEC) **** IP68 tested to a minimum depth of 30 metres for 12 hours, alternate depths / durations can be provided upon request.



GLOBAL PRODUCT CERTIFICATION			
ATEX CERTIFICATE	CML18ATEX1325X, CML18ATEX4317X	IECEx CERTIFICATE	IECEx CML 18.0182X, IECEx SIM 14.0008X
CODE OF PROTECTION	⊕ II 2G 1D, Ex db IIC Gb, Ex eb IIC Gb, Ex ta IIC Da ⊕ II 3G Ex nR IIC Gc, ⊕ I M2 Ex db I Mb, Ex eb I Mb	CODE OF PROTECTION	Ex db IIC Gb, Ex eb IIC Gb, Ex nR IIC Gc, Ex ta IIC Da, Ex db I Mb, Ex eb I Mb
COMPLIANCE STANDARDS	EN 60079-0, 1, 7, 15, 31	COMPLIANCE STANDARDS	IEC 60079-0, 1, 7, 15, 31
cCSAus CERTIFICATE (20S16-90)	2288626		
CSAus CODE OF PROTECTION***	Class I, Div. 1, 2 Groups A, B, C and D; Class II, Div. 1, 2 Groups E, F and G; Class III, Div. 1, 2; Type 4X: Oil Resistant II: Class I, Zone 1 AEx d IIC Gb, AEx e IIC Gb, Class I, Zone 2 AEx nR IIC Gc, Class I, Zone 20 AEx ta IIC Da		
cCSA CODE OF PROTECTION***	Class I, Div. 1, 2 Groups A, B, C and D; Class II, Div. 1, 2 Groups E, F and G; Class III, Div. 1, 2; Type 4X: Oil Resistant II: Ex d IIC Gb, Ex e IIC Gb, Ex nR IIC Gc, Ex ta IIC Da		
COMPLIANCE STANDARDS	CAN/CSA-C22.2 No 0, 18, 25, 30, 94, 174, CAN/CSA-60079-0, 1, 7, 15, 31 CAN/CSA-E612411 Part 11, ANSI/UL 514B Ed 5, ANSI/UL 50 Ed 11, ANSI/UL 2225 Ed 4, UL60079		
UL CERTIFICATE (20S16-100)	E201187, E161256		
CODE OF PROTECTION	Class I Div 1, 2, Groups A, B, C, D, Class II Div 1, 2, Groups E, F, G		
COMPLIANCE STANDARDS	UL 2225, CSA C22.2 No 174, UL 514B, CSA C22.2 No 18, CSA C22.2 No 30		
KCS KOSHA CERTIFICATE	14-GA4B0-0252X	ECAS CERTIFICATE	20-02-05624
EAC CERTIFICATE	TC RU C-GB.AA87.B.00487	Ukr SEPPO	CL1 19.0371X
RETIE APPROVAL NUMBER	03866	CCOE / PESO (INDIA) CERTIFICATE	P444949
NEPSI CERTIFICATE	GJY18.1252X	INMETRO APPROVAL	TUV 12.2073X
MARINE APPROVALS	LRS: 01/00172 DNV: TAE000000Y ABS: 20-LD1948801-PDA, BV: 431801 ABV		



† Grooved Cone (X) is predominantly used for Wire Braid (e.g. GSWB, TCWB), Steel Tape Armour (STA, DSTA) and Aluminium Strip Armour (ASA) but is also suitable for Single Wire Armour (SWA), Aluminium Wire Armour (AWA) and Pliable Wire Armour (PWA) if the range is outside that of the Stepped Cone (W). Grooved Cone (X) dimensions shown in the Cable Gland Selection Table below are for a double wire strand of braid armour cables. Tapes can also be doubled over. For cables that have only a single layer of armour such as SWA the clamping range should be used as shown in the table below. Stepped (W) Cone is suitable for Single Wire Armour (SWA), or Aluminium Wire Armour (AWA) cables.

COMBINED ORDERING REFERENCE (*BRASS METRIC)			AVAILABLE ENTRY THREADS "C" (ALTERNATE METRIC THREAD LENGTHS AVAILABLE)						NUMBER OF CORES	DIAMETER OVER CONDUCTORS "A"	CABLE BEDDING DIAMETER "G"	OVERALL CABLE DIAMETER "B"	ARMOUR RANGE †				ACROSS FLATS "D"	ACROSS CORNERS "D"	PROTRUSION LENGTH "E"	SHROUD	CABLE GLAND WEIGHT (Kgs)
			STANDARD		OPTION		GROOVED CONE (X)						STEPPED CONE (W)								
SIZE	TYPE	ORDERING SUFFIX	METRIC	THREAD LENGTH (METRIC) "E"	NPT	THREAD LENGTH (NPT) "E"	NPT	MAX	MAX	MAX	MIN	MAX	MIN	MAX	MIN	MAX	MAX	MAX			
20S16	PX2K	1RA	M20	15.0	1/2"	19.9	3/4"	21	11.7	11.7	6.1	13.1	0.3	1.0	0.8	1.25	30.5	33.6	62.0	PVC06	0.24
20S	PX2K	1RA	M20	15.0	1/2"	19.9	3/4"	21	11.7	11.7	9.5	15.9	0.3	1.0	0.8	1.25	30.5	33.6	62.0	PVC06	0.23
20	PX2K	1RA	M20	15.0	1/2"	19.9	3/4"	21	12.6	12.9	12.5	20.9	0.4	1.0	0.8	1.25	30.5	33.6	63.0	PVC06	0.24
25S	PX2K	1RA	M25	15.0	3/4"	20.2	1"	30	17.5	17.9	14.0	22.0	0.4	1.2	1.25	1.6	37.5	41.3	69.5	PVC09	0.37
25	PX2K	1RA	M25	15.0	3/4"	20.2	1"	30	17.5	17.9	18.2	26.2	0.4	1.2	1.25	1.6	37.5	41.3	69.5	PVC09	0.37
32	PX2K	1RA	M32	15.0	1"	25.0	1 1/4"	50	23.6	23.9	23.7	33.9	0.4	1.2	1.6	2.0	46.0	50.6	75.0	PVC11	0.57
40	PX2K	1RA	M40	15.0	1 1/4"	25.6	1 1/2"	59	30.0	30.3	27.9	40.4	0.4	1.6	1.6	2.0	55.0	60.5	75.0	PVC15	0.80
50S	PX2K	1RA	M50	15.0	1 1/2"	26.1	2"	89	36.6	36.9	35.2	46.7	0.4	1.6	2.0	2.5	60.0	66.0	77.0	PVC18	0.90
50	PX2K	1RA	M50	15.0	2"	26.9	2 1/2"	115	41.0	41.3	40.4	53.0	0.6	1.6	2.0	2.5	70.0	77.0	77.0	PVC21	1.19
63S	PX2K	1RA	M63	15.0	2"	26.9	2 1/2"	115	47.9	47.8	45.6	59.4	0.6	1.6	2.0	2.5	75.0	82.5	79.7	PVC23	1.39
63	PX2K	1RA	M63	15.0	2 1/2"	39.9	3"	115	53.7	54.0	54.6	65.8	0.6	1.6	2.0	2.5	80.0	88.0	80.3	PVC25	1.41
75S	PX2K	1RA	M75	15.0	2 1/2"	39.9	3"	140	59.9	60.2	59.0	72.0	0.6	1.6	2.0	2.5	90.0	99.0	86.8	PVC28	2.09
75	PX2K	1RA	M75	15.0	3"	41.5	3 1/2"	140	64.2	64.2	66.7	78.4	0.6	1.6	2.5	3.0	100.0	110.0	88.3	PVC30	2.54
90	PX2K	1RA	M90	24.0	3 1/2"	42.8	4"	140	75.3	75.6	76.2	90.3	0.8	1.6	3.15	4.0	115.0	126.5	102.1	PVC32	3.71
100	PX2K	1RA	M100	24.0	3 1/2"	42.8	4"	200	85.6	85.9	86.1	101.4	0.8	1.6	3.15	4.0	127.0	139.7	114.0	LSF33	4.31

* For material options add the following suffix to the Ordering Reference; Brass (no suffix required); Nickel Plated Brass '5'; 316 Grade Stainless Steel '4'; Copper Free Aluminium '1' For NPT options add the following digits to the material suffix; 1/2" = 31; 3/4" = 32; 1" = 33; 1 1/4" = 34; 1 1/2" = 35; 2" = 36; 2 1/2" = 37; 3" = 38; 3 1/2" = 39; 4" = 310 (Brass requires prefix '0')

Examples: 32PX2K1RA534 = Nickel Plated Brass 1 1/4" NPT, 50SPX2K1RA035 = Brass 1 1/2" NPT, 25PX2K1RA432 = Stainless Steel 3/4" NPT, 20PX2K1RA5 = Nickel Plated Brass M20

Dimensions are displayed in millimetres unless otherwise stated

Dimensions listed are for metric cable glands only. Dimensions for alternative threads may vary, please see supplementary technical data sheet.